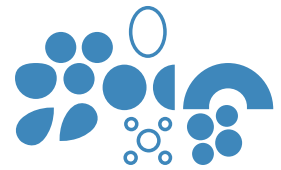
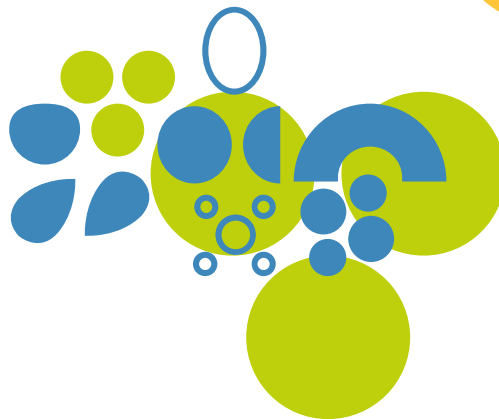
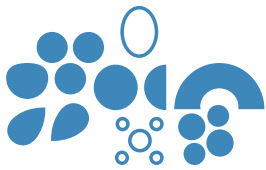
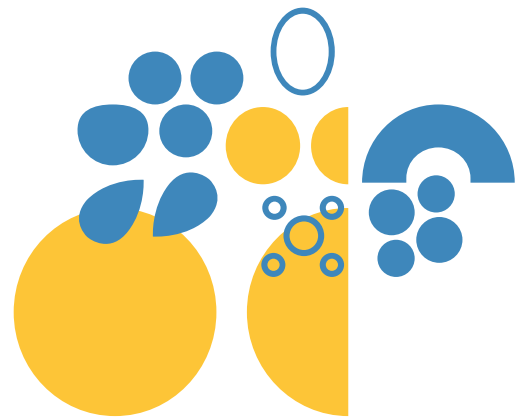
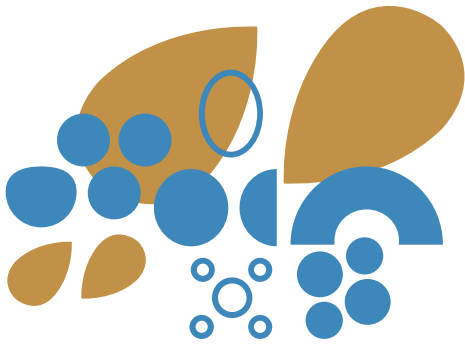


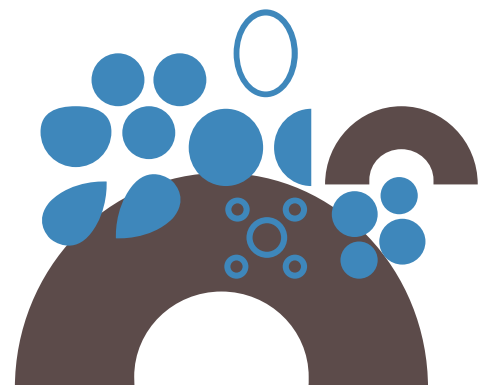
ICEMATIC

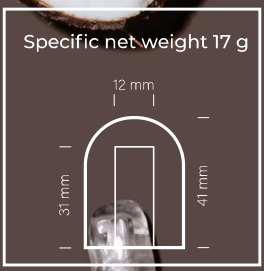
BE COLD WITH STYLE



PRICE LIST

SEPTEMBER
2022





SERIES
COCO

HOLLOW CUBE
HO.RE.CA.



THE CUBE



A hollow ice cube, with wide surface for fast beverage cooling. With a simple and essential shape, it grants an extreme flexibility of use.

Soft drinks, cocktails, café and / or other preparations that needs a rapid cooling, will identify Coco series

hollow ice cube as the perfect ally. The paddle system is the sole technology suitable to grant the correct machines functioning, also with hard waters full of scale and impurities. Coco series is the most versatile, for any type of installation.

THE ICEMAKER

Modern design with rounded corners and fully stainless-steel body. The paddle system with fingers-evaporator is the sole technology suitable to grant the correct machines functioning, also with hard waters full of scale and impurities.



CHARACTERISTICS

- LARGE INCORPORATED STORAGE BIN CAPACITY
- CAPACITIVE TOUCH CONTROL FOR STAND-BY AND RESET
- AUTOMATIC WASHING
- EXTRACTIBLE FRONTAL AIR FILTER
- FRONT AIR INTAKE/OUTLET
- SUPPLY CABLE WITH SCHUKO PLUG

Price List

22



OPTIONAL & ACCESSORIES



Rainbow Technology

Nano-technological patented treatment that strengthens and protects evaporators from aggressive agents and scaling.



Ozone Sanitization

For a safe and deep sanitization of your icemaker. Programmable cycle.



Cleaning Kit

Cleaning kit including a plastic container for the correct dosage of citric acid and a citric acid package of 1 kg. Useful for carrying out an efficient cleaning cycle.

Price List



Legs Kit

For adapting the ideal machine height, in the installation context.



Drain-pump Kit

External drain pump kit, compatible with all icemakers of the range.



Impurities filter Kit

Special external filter to avoid impurities accumulation inside the icemaker.

Price List

2022

COCO



APP
ICEMATIC
MY ICE

K 23 NANO A-W 1.550 €

FEATURES

Dimensions (LXPXH):
340 x 545 x 620 mm

Standard voltage
220-240/1/50Hz

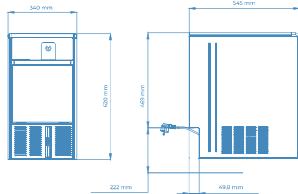
Production kg/24h (10°/10°)
23 (A) | 23 (W)

Bin capacity: 5 kg

Net weight: 29 kg

Shipping data:
460 x 600 x 850 mm - 36 kg

Refrigerant Gas: R290



COCO



APP
ICEMATIC
MY ICE

K 23 A-W 1.480 €

FEATURES

Dimensions (LXPXH):
340 x 545 x 690 mm

Standard voltage
220-240/1/50Hz

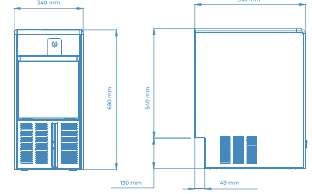
Production kg/24h (10°/10°)
23 (A) | 23 (W)

Bin capacity: 7 kg

Net weight: 30 kg

Shipping data:
460 x 600 x 850 mm - 37 kg

Refrigerant Gas: R290



K 23 NANO F A-W 1.580 €

FEATURES

Dimensions (LXPXH):
340 x 545 x 620 mm

Standard voltage
220-240/1/50Hz

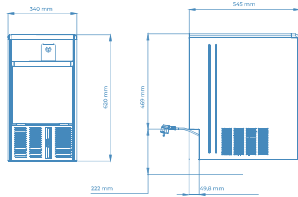
Production kg/24h (10°/10°)
21 (A) | 19 (W)

Bin capacity: 5 kg

Net weight: 29 kg

Shipping data:
460 x 600 x 850 mm - 36 kg

Refrigerant Gas: R134a



K 23 F A-W 1.520 €

FEATURES

Dimensions (LXPXH):
340 x 545 x 690 mm

Standard voltage
220-240/1/50Hz

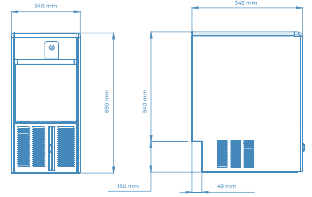
Production kg/24h (10°/10°)
21 (A) | 19 (W)

Bin capacity: 7 kg

Net weight: 30 kg

Shipping data:
460 x 600 x 850 mm - 37 kg

Refrigerant Gas: R134a



COCO



K 25 A-W

1.590 €

FEATURES

Dimensions (LXPXH):
400 x 545 x 690 mm

Standard voltage
220-240V/50Hz

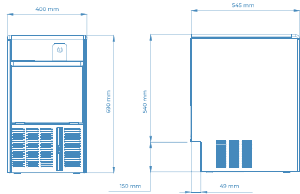
Production kg/24h (10°/10°)
25 (A) | 24 (W)

Bin capacity: 10 kg

Net weight: 33 kg

Shipping data:
460 x 600 x 850 mm - 39 kg

Refrigerant Gas: R290



COCO



K 30 A-W

1.780 €

FEATURES

Dimensions (LXPXH):
400 x 545 x 690 mm

Standard voltage
220-240V/50Hz

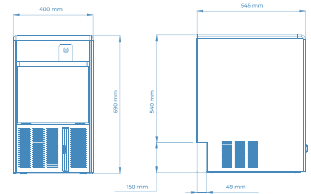
Production kg/24h (10°/10°)
28 (A) | 27 (W)

Bin capacity: 10 kg

Net weight: 32 kg

Shipping data:
460 x 600 x 850 mm - 39 kg

Refrigerant Gas: R290



K 25 F A-W

1.620 €

FEATURES

Dimensions (LXPXH):
400 x 545 x 690 mm

Standard voltage
220-240V/50Hz

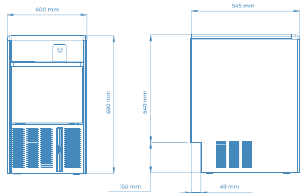
Production kg/24h (10°/10°)
25 (A) | 23 (W)

Bin capacity: 10 kg

Net weight: 33 kg

Shipping data:
460 x 600 x 850 mm - 39 kg

Refrigerant Gas: R134a



K 30 F A-W

1.820 €

FEATURES

Dimensions (LXPXH):
400 x 545 x 690 mm

Standard voltage
220-240V/50Hz

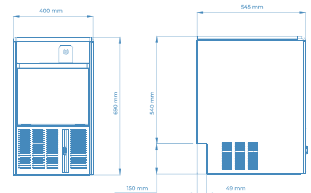
Production kg/24h (10°/10°)
30 (A) | 27 (W)

Bin capacity: 10 kg

Net weight: 32 kg

Shipping data:
460 x 600 x 850 mm - 39 kg

Refrigerant Gas: R134a



COCO



APP
ICEMATIC
MY ICE

K 36 A-W

2.080 €

FEATURES

Dimensions (LXPXH):
450 x 545 x 690 mm

Standard voltage
220-240V/1/50Hz

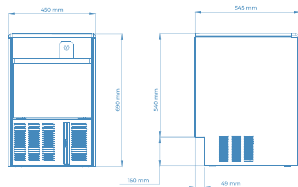
Production kg/24h (10°/10°)
36 (A) | 36 (W)

Bin capacity: 12 kg

Net weight: 36 kg

Shipping data:
510 x 600 x 850 mm - 42 kg

Refrigerant Gas: R290



COCO



APP
ICEMATIC
MY ICE

K 45 A-W

2.470 €

FEATURES

Dimensions (LXPXH):
500 x 600 x 693 mm

Standard voltage
220-240V/1/50Hz

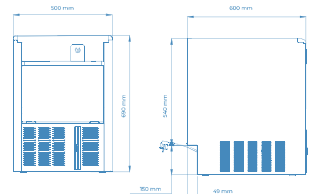
Production kg/24h (10°/10°)
45 (A) | 46 (W)

Bin capacity: 16 kg

Net weight: 41 kg

Shipping data:
560 x 660 x 850 mm - 48 kg

Refrigerant Gas: R290



K 36 F A-W

2.130 €

FEATURES

Dimensions (LXPXH):
450 x 545 x 690 mm

Standard voltage
220-240V/1/50Hz

Production kg/24h (10°/10°)
37 (A) | 35 (W)

Bin capacity: 12 kg

Net weight: 36 kg

Shipping data:
510 x 600 x 850 mm - 42 kg

Refrigerant Gas: R134a



K 45 F A-W

2.510 €

FEATURES

Dimensions (LXPXH):
500 x 600 x 693 mm

Standard voltage
220-240V/1/50Hz

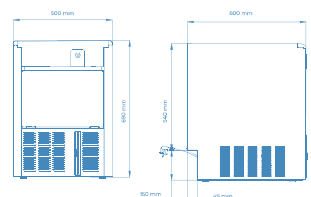
Production kg/24h (10°/10°)
45 (A) | 46 (W)

Bin capacity: 16 kg

Net weight: 41 kg

Shipping data:
560 x 660 x 850 mm - 48 kg

Refrigerant Gas: R134a



COCO



APP
ICEMATIC
MY ICE

K 50 A-W

2.640 €

FEATURES

Dimensions (LXPXH):
500 x 585 x 956 mm

Standard voltage
220-240/1/50Hz

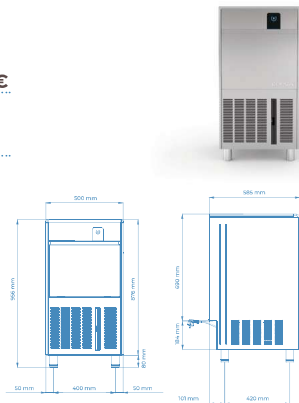
Production kg/24h (10°/10°)
50 (A) | 50 (W)

Bin capacity: 21 kg

Net weight: 51 kg

Shipping data:
560 x 640 x 1050 mm - 58 kg

Refrigerant Gas: R290



COCO



APP
ICEMATIC
MY ICE

K 62 A-W

2.690 €

FEATURES

Dimensions (LXPXH):
600 x 585 x 956 mm

Standard voltage
220-240/1/50Hz

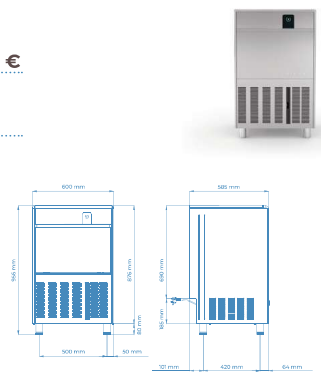
Production kg/24h (10°/10°)
62 (A) | 66 (W)

Bin capacity: 28 kg

Net weight: 52 kg

Shipping data:
660 x 640 x 1050 mm - 60 kg

Refrigerant Gas: R290



K 50 F A-W

2.680 €

FEATURES

Dimensions (LXPXH):
500 x 585 x 956 mm

Standard voltage
220-240/1/50Hz

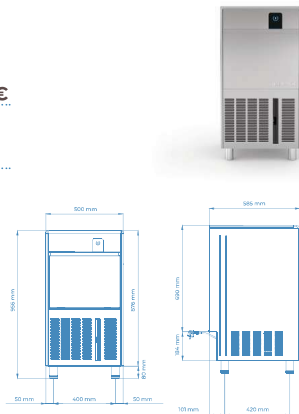
Production kg/24h (10°/10°)
50 (A) | 48 (W)

Bin capacity: 21 kg

Net weight: 51 kg

Shipping data:
560 x 640 x 1050 mm - 58 kg

Refrigerant Gas: R134a



K 62 F A-W

2.740 €

FEATURES

Dimensions (LXPXH):
600 x 585 x 956 mm

Standard voltage
220-240/1/50Hz

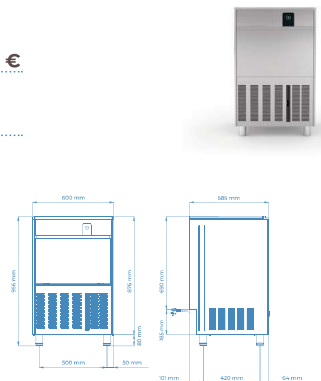
Production kg/24h (10°/10°)
60 (A) | 58 (W)

Bin capacity: 28 kg

Net weight: 52 kg

Shipping data:
660 x 640 x 1050 mm - 60 kg

Refrigerant Gas: R134a



COCO



K 80 A-W

3.500 €

FEATURES

Dimensions (LXPXH):
700 x 585 x 956 mm

Standard voltage
220-240/1/50Hz

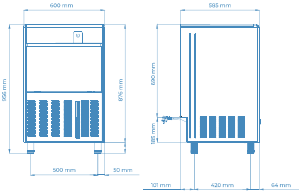
Production kg/24h (10°/10°)
80 (A) | 81 (W)

Bin capacity: 36 kg

Net weight: 56 kg

Shipping data:
760 x 640 x 1050 mm - 65 kg

Refrigerant Gas: R290



COCO



K 95 A-W

3.920 €

FEATURES

Dimensions (LXPXH):
800 x 585 x 956 mm

Standard voltage
220-240/1/50Hz

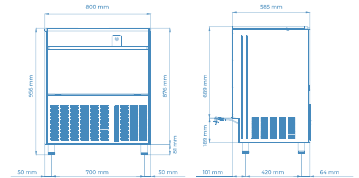
Production kg/24h (10°/10°)
96 (A) | 105 (W)

Bin capacity: 40 kg

Net weight: 66 kg

Shipping data:
860 x 640 x 1050 mm - 76 kg

Refrigerant Gas: R290



K 80 F A-W

3.570 €

FEATURES

Dimensions (LXPXH):
700 x 585 x 956 mm

Standard voltage
220-240/1/50Hz

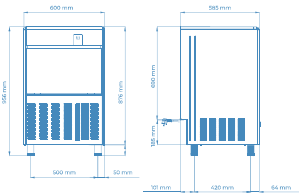
Production kg/24h (10°/10°)
80 (A) | 81 (W)

Bin capacity: 36 kg

Net weight: 56 kg

Shipping data:
760 x 640 x 1050 mm - 65 kg

Refrigerant Gas: R134a



K 95 F A-W

3.990 €

FEATURES

Dimensions (LXPXH):
800 x 585 x 956 mm

Standard voltage
220-240/1/50Hz

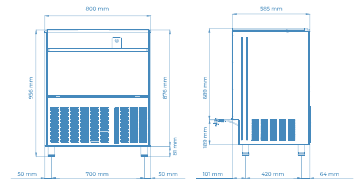
Production kg/24h (10°/10°)
92 (A) | 90 (W)

Bin capacity: 40 kg

Net weight: 66 kg

Shipping data:
860 x 640 x 1050 mm - 76 kg

Refrigerant Gas: R134a



COCO



APP
ICEMATIC
MY ICE

K 150 A-W

4.790 €

FEATURES

Dimensions (LXPXH):
920 x 650 x 1280 mm

Standard voltage
220-240V/50Hz

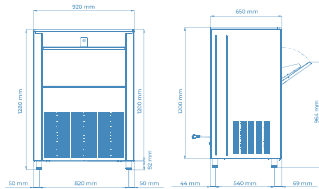
Production kg/24h (10°/10°)
150 (A) | 151 (W)

Bin capacity: 67 kg

Net weight: 105 kg

Shipping data:
970 x 700 x 1370 mm - 116 kg

Refrigerant Gas: R290



OPTIONAL



Rainbow Technology

155 €

Ozone Sanitization

790 €

Special voltages on request

+ 5% on the list price

ACCESSORIES



Cleaning Kit

50 €

Drain-pump Kit

600 €

Legs Kit

90 €

Impurities filter kit

20 €

K 150 F A-W

4.880 €

FEATURES

Dimensions (LXPXH):
920 x 650 x 1280 mm

Standard voltage
220-240V/50Hz

Production kg/24h (10°/10°)
150 (A) | 142 (W)

Bin capacity: 67 kg

Net weight: 105 kg

Shipping data:
970 x 700 x 1370 mm - 116 kg

Refrigerant Gas: R134

